

Hydrophilic PTFE Syringe Filters

Cobetter PTFE syringe filters are made of chemically inert hydrophobic PTFE membrane with highest chemical compatibility. For filtration of aqueous liquids pre-rinsing with a solvent is necessary. The housing is made of premium polypropylene which has a wide chemical compatibility. The Over molded design ensures higher operating pressures. Luer lock inlet/outlet offers leak-tight syringe connection.

Features

- Available in 13mm, 25mm diameter
- A variety of pore sizes to suit your application needs, 0.22µm / 0.45µm
- HPLC-certified for low levels of UV-absorbing extractables
- Color code: White

Applications

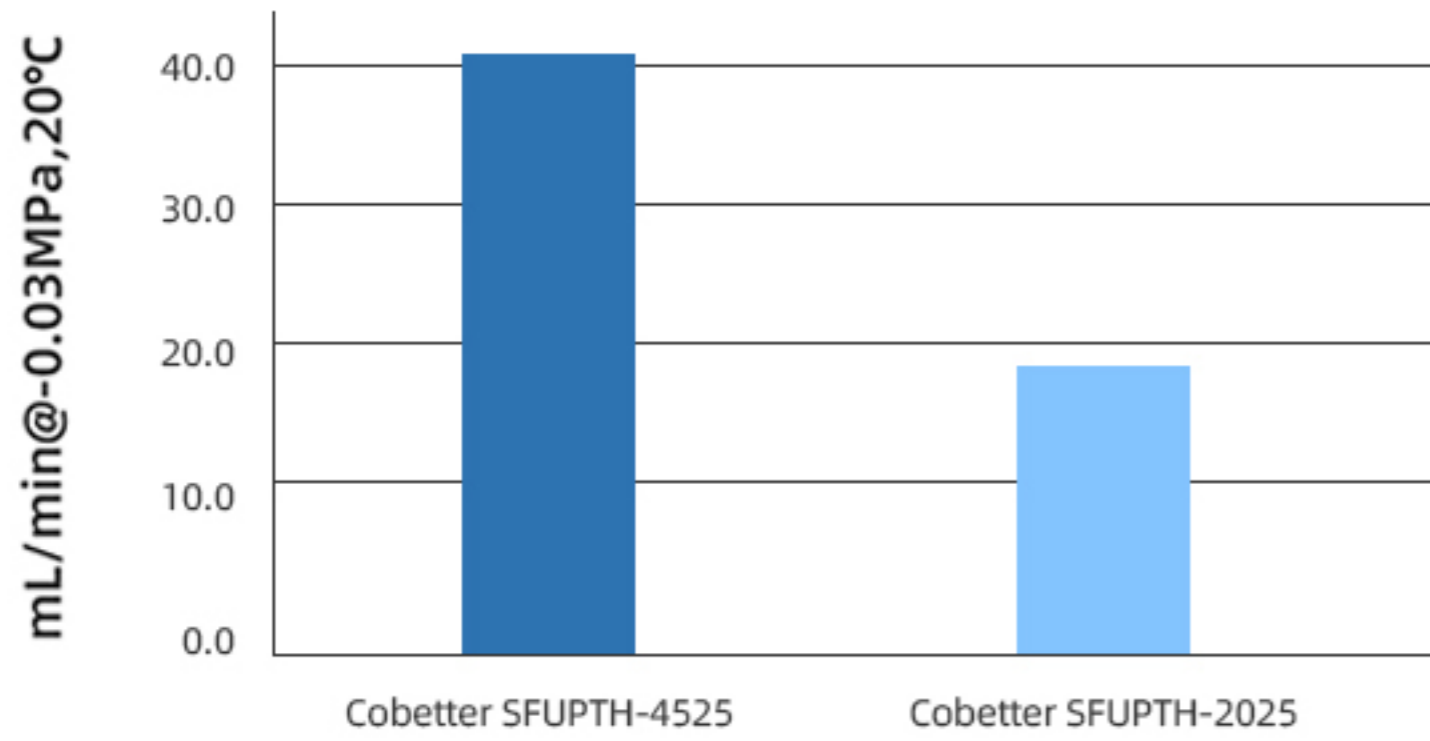
- For sample filtration before UHPLC, HPLC, and LC-MS
- Filtration of aqueous and organic solvents



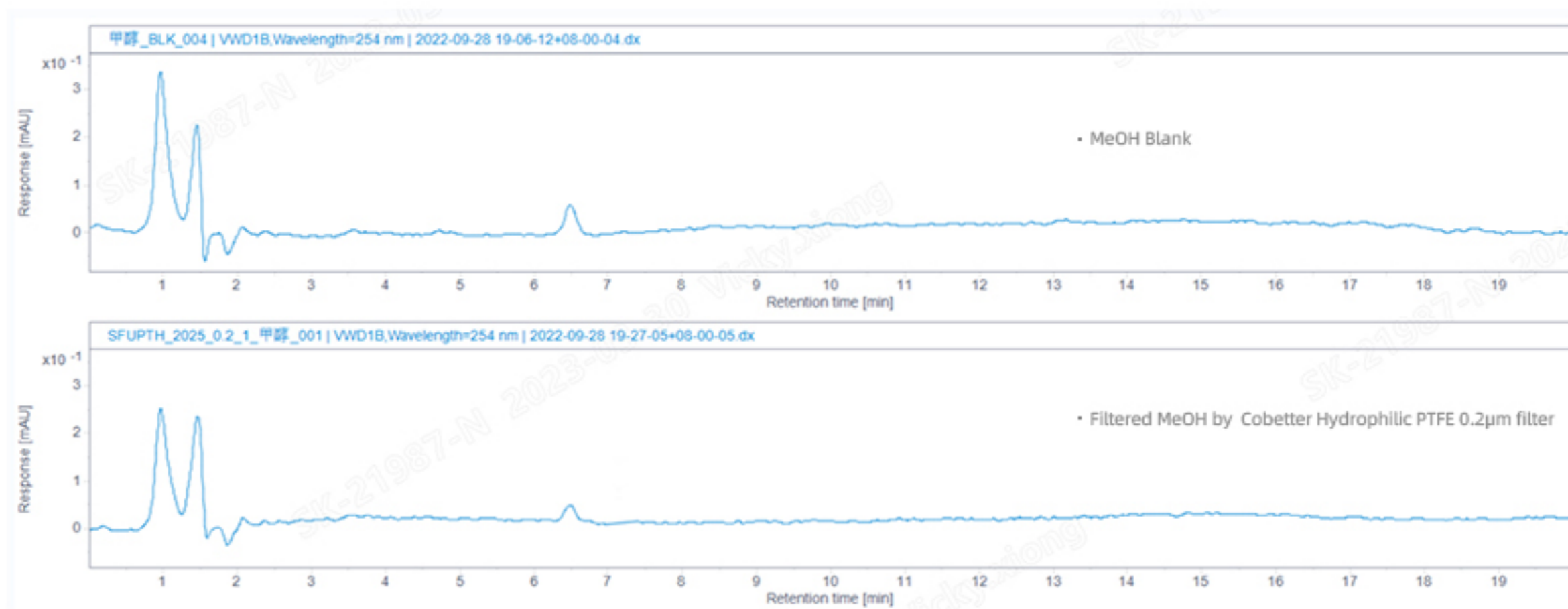
Specifications

Connections	Inlet	Female Luer Lock	
	Outlet	Male Luer Slip	
Materials	Housing	Polypropylene	
	Membrane	PTFE	
	Wettability	Hydrophilic	
Physical Properties	Filter Diameter	13mm	25mm
	Filtration Area	0.72cm ²	3.4cm ²
	Maximum Operating Pressure	6bar	3bar
Sterility	Delivery Condition	Nonsterile	
	Sterilization Method	Not Recommended	
Package	Pack Size	100pcs	
	Packaging	Bulk packed	

Water Flow Rate



HPLC chromatogram of Cobetter Hydrophilic PTFE Syringe Filter



Ordering Information

Part No.	Membrane	Diameter	Pore size	Qty/box (pcs)
SFUPTH-2013	Hydrophilic PTFE	13mm	0.2µm	100
SFUPTH-4513	Hydrophilic PTFE	13mm	0.45µm	100
SFUPTH-2025	Hydrophilic PTFE	25mm	0.2µm	100
SFUPTH-4525	Hydrophilic PTFE	25mm	0.45µm	100